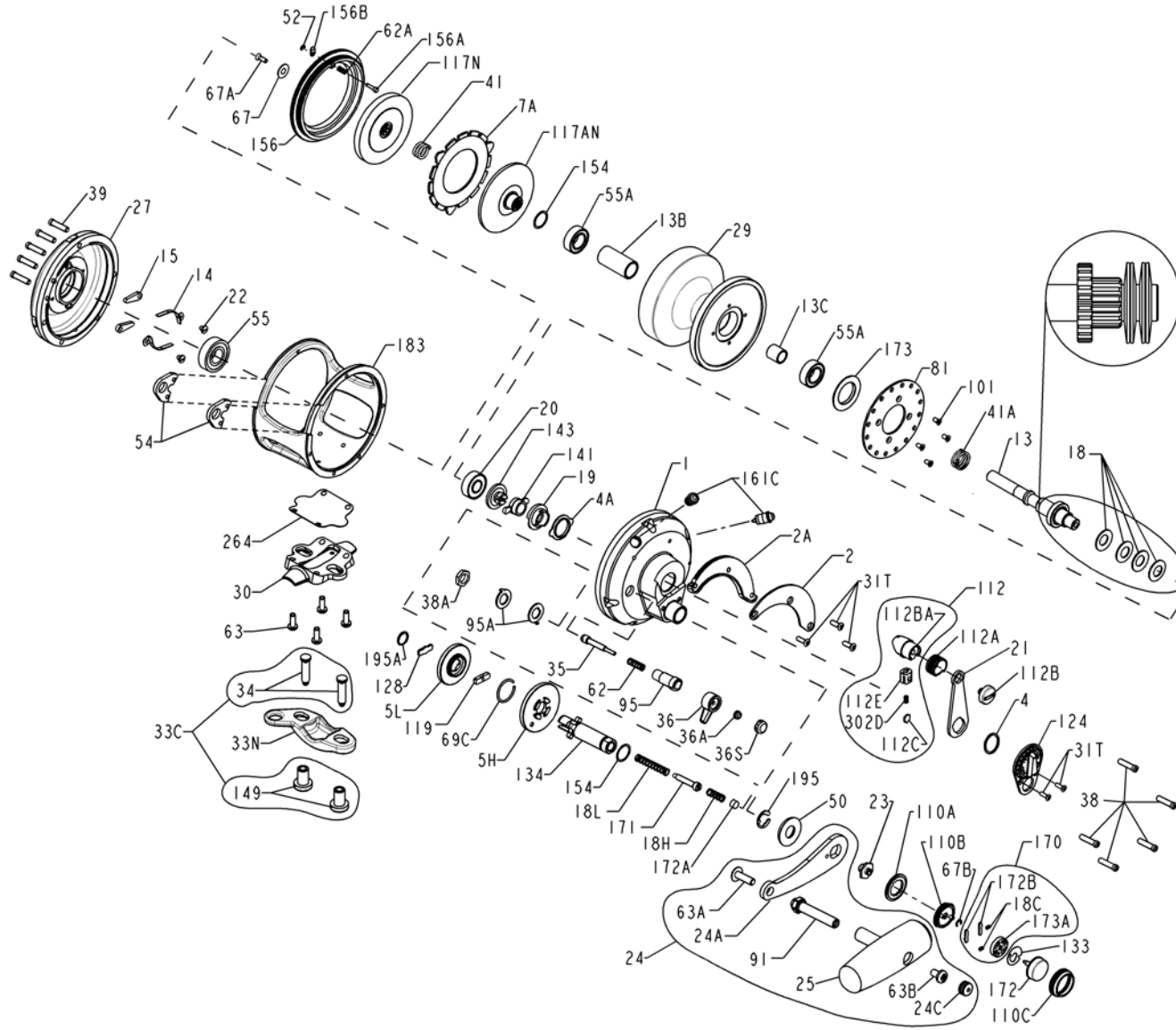




PARTS LIST FOR MODEL 30VSX



KEY NO.	DESCRIPTION	PART NO.
1	Right Side Plate Assembly	001 030VSX
2	Quadrant Ring	002 030VS
2A	Quadrant Spacer	002A030VS
4	Thrust Washer	004 012LT
4A	Cam Bushing	004 030VS
5H	Main Gear (High Speed)	005 030VSHS
5L	Main Gear (Low Speed)	005 030VSL
7A	Metal Drag Washer	007A030VS

KEY NO.	DESCRIPTION	PART NO.
13	Pinion Gear	013 030VSX
13B	Pinion Gear Sleeve	013B030VS
13C	Spool Sleeve	013B070
14	Dog Spring (2 req)	014 050
15	Dog (2 req)	015 050
18	Disc Clutch Spring (4 req)	018 030TW
18C	Shift Catch Spring (2 req)	018C015KG
18H	Shift Spring (Heavy)	018H030VS
18L	Shift Spring (Light)	018L030VS
19	Drag Cam	019 030VS

KEY NO.	DESCRIPTION	PART NO.
20	Ball Bearing	020 704
21	Drag Lever	021 030VS
22	Dog Spring Screw (2 req)	022 109
23	Handle Screw	023 030VS
24	Knob Assembly	024 030VS
24A	Handle Blank	024 030VS-1
24C	Handle Knob Cap	024C050M
25	Knob Assembly	025 050M
27	Left Side Plate Assembly	027 030VSX
29	Spool Assembly	029L030VSX

KEY NO.	DESCRIPTION	PART NO.
31T	Short Screw (5 req)	031T070
33C	Rod Clamp Screw w/Nut (2 ea)	033C070VS
33N	Rod Clamp	033N070
34	Rod Clamp Screw (2 req)	034 070VS
35	Click Tongue	035 070
36	Click Button	036N050
36A	Click Button Nut	036 700
36S	Click Button Cap	036S080ST
38	R.S. Plate Screw (5 req)	038 016VS
38A	Click Bushing Nut	038 710
39	L.S. Plate Screw (5 req)	039 016VS
41	1/2" Dia. Spring	041 2.5FR
41A	3/8" Dia. Spring	041 070
50	Shield	050 050VS
52	Retaining Ring	052 910
54	Harness Lug (2 req)	054 030T
55	Ball Bearing	055 080
55A	Ball Bearing (2 req.)	055 080ST
62	Click Spring	062 050
62A	Drag Cover Lock Spring	062 545
63	Stand Screw (4 req.)	063 030T
63A	Screw	063A050
63B	Screw	063 050
67	Pinion Retaining Washer	067 070
67A	Pinion Retaining Screw	067A070
67B	Shifter Retaining Ring	067 030VS
69C	H / L Gear Retaining Ring	069C245
81	Ratchet Disk Plate	081 050
91	Handle Rivet	091N050
95	Click Tongue Bushing	095 070
95A	Click Bushing Washer (2 req)	095A050
101	Drag / Ratchet Screw (4 req)	101 030
110A	Handle Screw Locking Ring	110A030VS
110B	Shifter Base	110B030VS
110C	Shifter Button Retaining Ring	110C030VS
112	Lever Knob Assembly	112 030VS
112A	Knob Sleeve	112A030VS
112B	Drag Knob Screw	112B070
112BA	Drag Lever Knob	112B030VS
112C	Drag Click Plate	112C030VS
112E	Drag Lever Click Plate Housing	112E030VS
117AN	Inner Drive Plate Assembly	117AN050S
117N	Drive Plate Assembly	117N050S
119	Hi/Low Gear Shift Plate	119 024KG
124	Bridge Cover Assembly	124L030VS
128	Low Gear Drive Plate	128A024KG
133	Shifter Retaining Plate	133 030VS
134	Gear Stud	134 030VS
141	Cam Follower	141 030VS
143	Drag Preset Adjusting Screw	143 016VS
149	Rod Clamp Nut (2 req)	149 070
154	Gear Stud/Drive Plate Shim (2 req)	154 080
156	Drag Cover Assembly	156 030VS
156A	Drag Cover Lock Pin	156A030VS
156B	Drag Cover Lock Plate	156B030VS
161C	Drag Locating Pin Asm (2 req)	161C030VSW
170	Catch Holder Assembly	170 030VS
171	Shifter Plunger (Screw)	171 030VS
172	Shifter Button	172 030VS
172A	Shifter Spacer	172B030VS
172B	Shifter Catch Plate (2 req)	173 030VS
173	Spool Bushing	173 050VS
173A	Shifter Catch Holder	173A030VS
183	Tube Frame	183 030VSX
195	Retaining Ring	195 040
195A	Spiral Retaining Ring	195 024KG
264	Stand Gasket	264 030VS
302D	Drag Click Plate Spring	302D525MAG

KEY NO.	DESCRIPTION	PART NO.
30	Stand	030 030VS
31T	Short Screw (5 req)	031T070
33C	Rod Clamp Screw w/Nut (2 ea)	033C070VS
33N	Rod Clamp	033N070
34	Rod Clamp Screw (2 req)	034 070VS
35	Click Tongue	035 070
36	Click Button	036N050
36A	Click Button Nut	036 700
36S	Click Button Cap	036S080ST
38	R.S. Plate Screw (5 req)	038 016VS
38A	Click Bushing Nut	038 710
39	L.S. Plate Screw (5 req)	039 016VS
41	1/2" Dia. Spring	041 2.5FR
41A	3/8" Dia. Spring	041 070
50	Shield	050 050VS
52	Retaining Ring	052 910
54	Harness Lug (2 req)	054 030T
55	Ball Bearing	055 080
55A	Ball Bearing (2 req.)	055 080ST
62	Click Spring	062 050
62A	Drag Cover Lock Spring	062 545
63	Stand Screw (4 req.)	063 030T
63A	Screw	063A050
63B	Screw	063 050
67	Pinion Retaining Washer	067 070
67A	Pinion Retaining Screw	067A070
67B	Shifter Retaining Ring	067 030VS
69C	H / L Gear Retaining Ring	069C245
81	Ratchet Disk Plate	081 050
91	Handle Rivet	091N050
95	Click Tongue Bushing	095 070
95A	Click Bushing Washer (2 req)	095A050
101	Drag / Ratchet Screw (4 req)	101 030
110A	Handle Screw Locking Ring	110A030VS
110B	Shifter Base	110B030VS
110C	Shifter Button Retaining Ring	110C030VS
112	Lever Knob Assembly	112 030VS
112A	Knob Sleeve	112A030VS
112B	Drag Knob Screw	112B070
112BA	Drag Lever Knob	112B030VS
112C	Drag Click Plate	112C030VS
112E	Drag Lever Click Plate Housing	112E030VS
117AN	Inner Drive Plate Assembly	117AN050S
117N	Drive Plate Assembly	117N050S
119	Hi/Low Gear Shift Plate	119 024KG
124	Bridge Cover Assembly	124L030VS
128	Low Gear Drive Plate	128A024KG
133	Shifter Retaining Plate	133 030VS
134	Gear Stud	134 030VS
141	Cam Follower	141 030VS
143	Drag Preset Adjusting Screw	143 016VS
149	Rod Clamp Nut (2 req)	149 070
154	Gear Stud/Drive Plate Shim (2 req)	154 080
156	Drag Cover Assembly	156 030VS
156A	Drag Cover Lock Pin	156A030VS
156B	Drag Cover Lock Plate	156B030VS
161C	Drag Locating Pin Asm (2 req)	161C030VSW
170	Catch Holder Assembly	170 030VS
171	Shifter Plunger (Screw)	171 030VS
172	Shifter Button	172 030VS
172A	Shifter Spacer	172B030VS
172B	Shifter Catch Plate (2 req)	173 030VS
173	Spool Bushing	173 050VS
173A	Shifter Catch Holder	173A030VS
183	Tube Frame	183 030VSX
195	Retaining Ring	195 040
195A	Spiral Retaining Ring	195 024KG
264	Stand Gasket	264 030VS
302D	Drag Click Plate Spring	302D525MAG