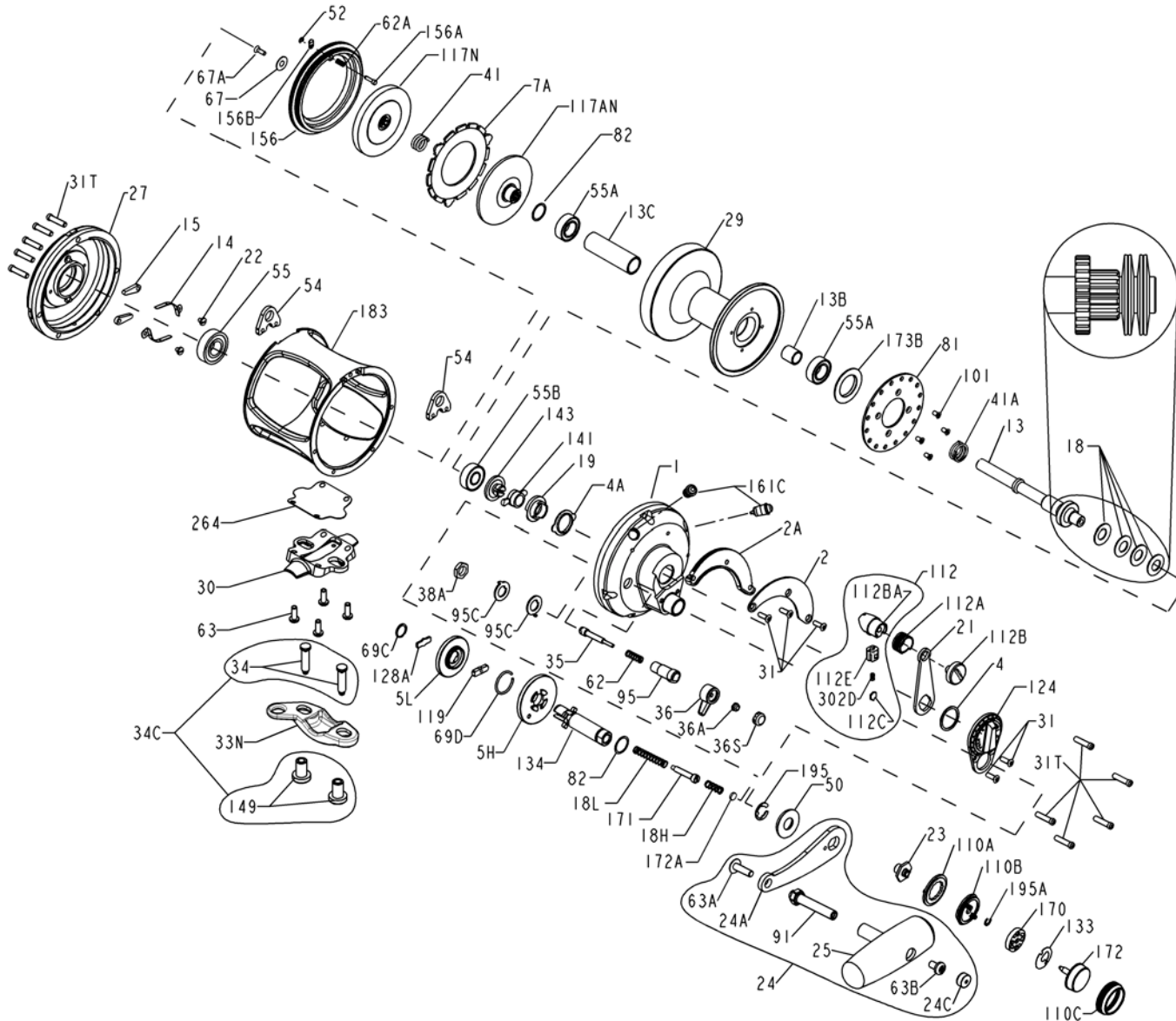




PARTS LIST FOR MODEL 30VSW



| KEY NO. | DESCRIPTION | PART NO. |
|---------|------------------------------|------------|
| 29 | Spool | 029L030VSW |
| 30 | Stand | 030 030VS |
| 31 | Short Screw (5 req) | 031T070 |
| 31T | Side Plate Screw (10 req) | 031 080VS |
| 33N | Rod Clamp | 033N070 |
| 34 | Clamp Screw (2 req) | 034 070VS |
| 34C | Rod Clamp Screw & Nut Kit | 034C070VS |
| 35 | Click Tongue | 035 070 |
| 36 | Click Button | 036N050 |
| 36A | Click Button Nut | 036 700 |
| 36S | Click Button Cap | 036S080ST |
| 38A | Click Bushing Nut | 038 710 |
| 41 | Spring | 041 2.5FR |
| 41A | Drag Spring | 041 070 |
| 50 | Shield | 050 050VS |
| 52 | Retaining Ring | 052 910 |
| 54 | Harness Lug (2 req) | 054 030T |
| 55 | L.S. Ball Bearing | 055 080 |
| 55A | Spool Ball Bearing (2 req) | 055 080ST |
| 55B | R.S. Ball Bearing | 020 704 |
| 62 | Click Spring | 062 050 |
| 62A | Drag Cover Lock Spring | 062 545 |
| 63 | Stand Screw (4 req) | 063 030T |
| 63A | Handle Rivet Screw | 063A050 |
| 63B | Knob Screw | 063 050 |
| 67 | Pinion Retaining Washer | 067 070 |
| 67A | Pinion Retaining Screw | 067A070 |
| 69C | Retaining Ring | 195 024KG |
| 69D | Retaining Ring | 069C245 |
| 81 | Click Ratchet Plate | 081 050 |
| 82 | Shim (2 req) (Spool+Shifter) | 154 080 |
| 91 | Handle Rivet | 091N050 |
| 95 | Click Tongue Bushing | 095 070 |
| 95C | Click Locking Washer (2 req) | 095A050 |
| 101 | Ratchet Screw (4 req) | 101 030 |
| 110A | Ring | 110A030VS |
| 110B | Shift Base | 110B030VS |
| 110C | Shift Button Retainer | 110C030VS |
| 112 | Lever Knob Assembly | 112 030VS |
| 112A | Knob Sleeve | 112A030VS |
| 112B | Drag Knob Screw | 112B070 |
| 112BA | Drag Lever Knob | 112B030VS |
| 112C | Drag Click Plate | 112C030VS |
| 112E | Drag Click Plate Housing | 112E030VS |
| 117AN | Inner Drive Plate | 117AN050S |
| 117N | Outer Drive Plate | 117N050S |
| 119 | Shift Plate | 119 024KG |
| 124 | Bridge Cover Assembly | 124L030VS |
| 128A | Drive Plate | 128A024KG |
| 133 | Retaining Plate | 133 030VS |
| 134 | Gear Stud | 134 030VS |
| 141 | Cam Follower | 141 030VS |
| 143 | Preset Screw | 143 016VS |
| 149 | Rod Clamp Nut (2 req) | 149 070 |
| 156 | Drag Cover | 156 030VS |
| 156A | Drag Cover Lock Pin | 156A030VS |
| 156B | Drag Cover Lock Plate | 156B030VS |
| 161C | Locating Pin Asm (2 req) | 161C030VSW |
| 170 | Catch Assembly | 170 030VS |
| 171 | Shift Plunger | 171 030VS |
| 172 | Shift Button | 172 030VS |
| 172A | Spacer | 172B030VS |
| 173B | Bearing Retainer | 173 050VS |
| 183 | Tube Frame | 183N030VSW |
| 195 | Retaining Ring | 195 040 |
| 195A | Retaining Ring | 067 030VS |
| 264 | Stand Gasket | 264 030VS |

| KEY NO. | DESCRIPTION | PART NO. |
|---------|------------------------|-------------|
| 1 | R.S. Plate Assembly | 001 030VS |
| 2 | Quadrant Ring | 002 030VS |
| 2A | Quadrant Spacer | 002A030VS |
| 4 | Thrust Washer | 004 012LT |
| 4A | Cam Bushing | 004 030VS |
| 5H | Main Gear (High Speed) | 005 030VSHS |
| 5L | Main Gear (Low Speed) | 005 030VSL |
| 7A | Metal Drag Washer | 007A030VS |

| KEY NO. | DESCRIPTION | PART NO. |
|---------|------------------------|------------|
| 13 | Pinion Gear | 013 030VSW |
| 13B | Pinion Gear Sleeve | 013B070 |
| 13C | Spool Sleeve | 013B030VSW |
| 14 | Handle Spring (2 req.) | 014 050 |
| 15 | Dog (2 req.) | 015 050 |
| 18 | Disc Spring (4 req.) | 018 030 |
| 18H | Shift Spring (Heavy) | 018H030VS |
| 18L | Shift Spring (Light) | 018L030VS |
| 19 | Eccentric Cam | 019 030VS |

| KEY NO. | DESCRIPTION | PART NO. |
|---------|---------------------------|-------------|
| 21 | Eccentric Lever | 021 030VS |
| 22 | Dog Spring Screw (2 req.) | 022 109 |
| 23 | Screw | 023 030VS |
| 24 | Handle Assembly | 024 030VS |
| 24A | Handle Blank | 024 030VS-1 |
| 24C | Handle Knob Cap | 024C050M |
| 25 | Knob Assembly | 025 050M |
| 27 | Left Side Plate-Assembly | 027 030VS |