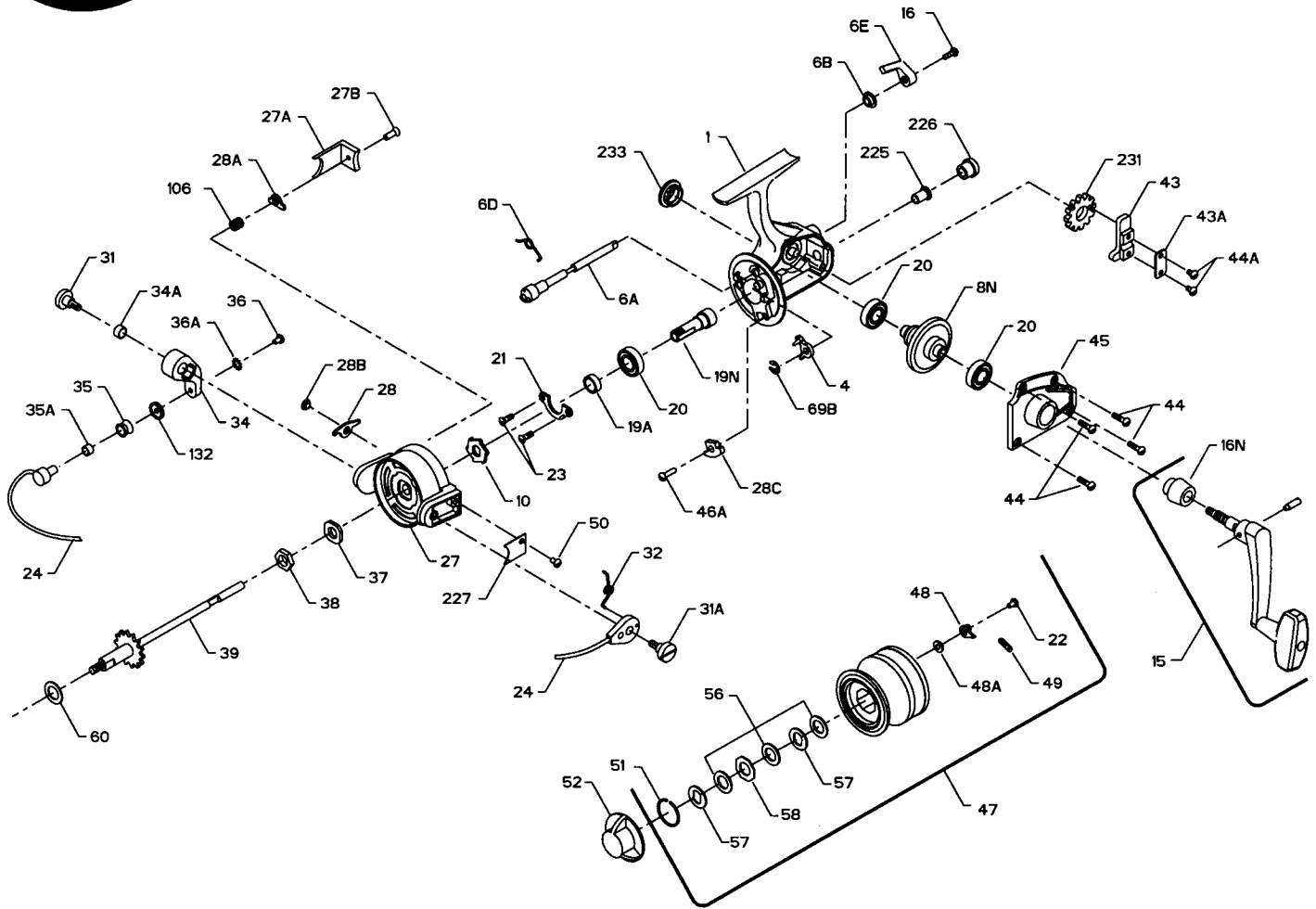




PARTS LIST FOR MODELS 4500SS AND 5500SS



KEY NO.	DESCRIPTION	4500 PART NO.	5500 PART NO.	KEY NO.	DESCRIPTION	4500 PART NO.	5500 PART NO.
1	Housing	1-4500	1-5500	35A	Line Roller Bushing	35A-704	35A-704
4	Dog	4-450	4-450	36	Bail Stud Screw	36-750	36-750
6A	Eccentric	6A-450	6A-450	36A	Lock Washer	36A-750	36A-750
6B	Eccentric Liner	6B-750	6B-750	37	Rotor Washer	37-450	37-450
6D	Eccentric Spring	6D-710	6D-710	38	Rotor Nut	38-550	38-550
6E	Eccentric Lever	6E-750	6E-750	39	Spool Shaft	39-450	39-550
8N	Main Gear	8N-5500	8N-5500	43	Crosswind Block	43-550	43-550
10	Ratchet	10-440	10-440	43A	Crosswind Block Plate	43A-550	43A-550
15	Handle	15-5500	15-5500	44	Cover Screw (4 req.)	44-704	44-704
16	Eccentric Screw	16-910	16-910	44A	Crosswind Block Screw	22-750	22-750
16N	Handle Collar	16-5500	16-5500	45	Housing Cover	45-5500	45-5500
19A	Pinion Spacer	19A-550	19A-550	46A	Trip Cam Screw	46A-704	46A-704
19N	Pinion	19N-4500	19N-5500	47	Spool (Complete)	47-4500	47-5500
20	Ball Bearing	20-722	20-722	48	Click Tongue	48-450	48-750
21	Bearing Cover	21-450	21-450	48A	Click Tongue Washer	48A-750	48A-750
22	Spool Click Screw	22-750	22-750	49	Click Tongue Spring	49-710	49-710
23	Bearing Cover Screw	23-750	23-750	50	Bail Spring Cover Screw	50-712	50-712
24	Bail Wire	24-450	24-5500	51	Retaining Ring	51-710	51-710
27	Rotor	27-4500	27-5500	52	Drag Knob	52-550	52-550
27A	Bail Trip Cover	27A-4500	27A-5500	56	Drag Washer-HT100 (3 req.)	56-710	56-710
27B	Rotor End Screw	27B-420	27B-420	57	Metal Keyed Washer (2 req.)	57-710	57-710
28	Trip Lever	28-450	28-5500	58	Metal Slot (Octagon)	58-710	58-710
28A	Cam Lever	28A-440	28A-440	60	Thrust Washer	60-450	60-550
28B	Trip Lever Bushing	28B-5500	28B-5500	69B	Dog Retaining Ring	69B-4400	69B-4400
28C	Trip Cam	28C-440	28C-440	106	Lever Spring	106-5500	106-5500
31	Bail Arm Screw	31-550	31-550	132	Roller Washer	132-450	132-450
31A	Bail Cam Screw	31A-450	31A-450	225	Crosswind Shaft Bushing	225-5500	225-5500
32	Bail Spring	32-440	32-440	226	Bushing Cap Cover	226-5500	226-5500
34	Bail Arm	34-450	34-450	227	Bail Spring Cover	227-440	227-440
34A	Bail Arm Bushing	34A-550	34A-550	231	Crosswind Gear	231-4500	231-5500
35	Line Roller	35-704	35-704	233	Bearing Cover	233-440	233-440