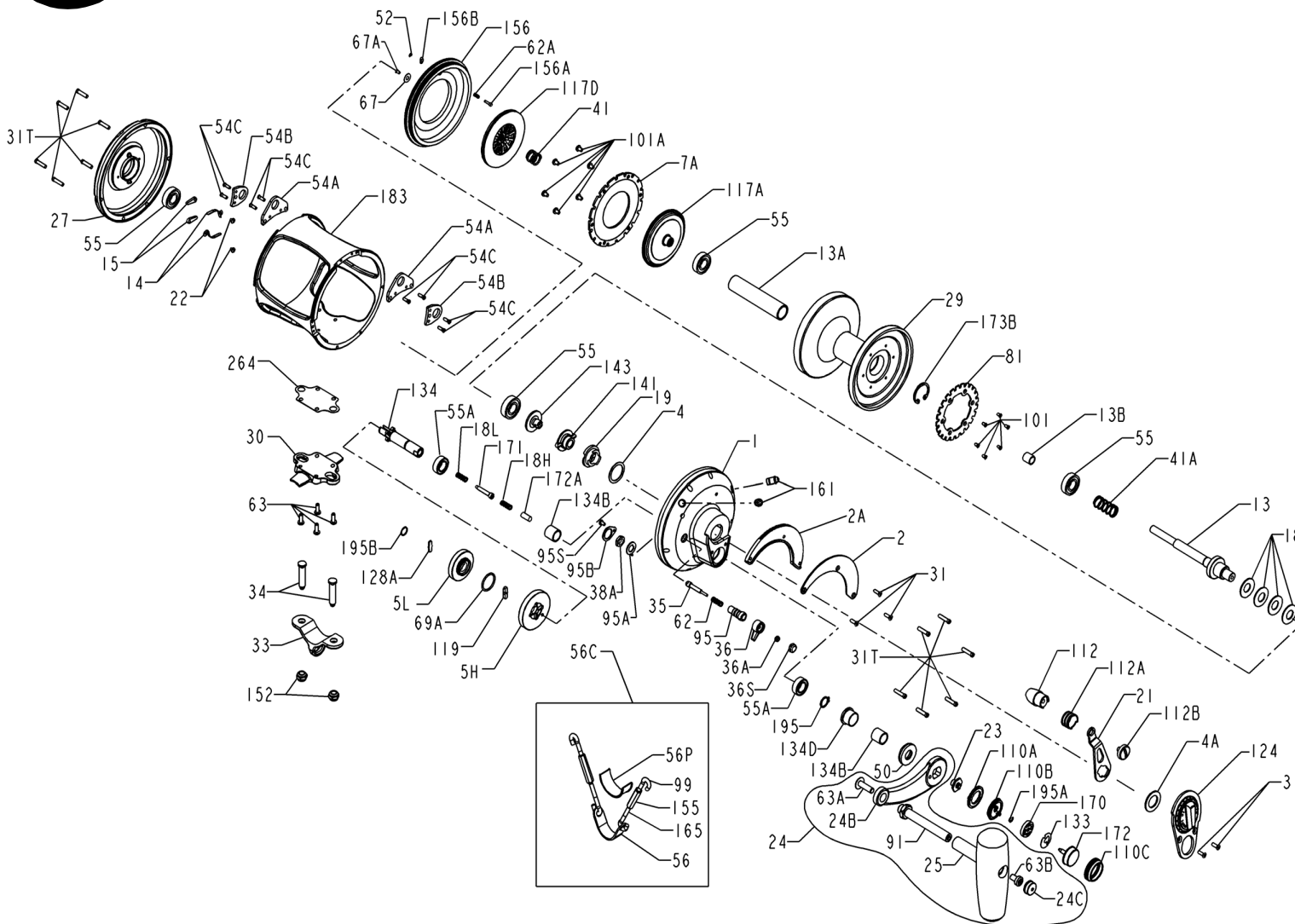




PARTS LIST FOR MODEL 80VSW



KEY NO.	DESCRIPTION	PART NO.
41	Bearing Spring	041 050
41A	Drag Spring	041 080VS
50	Shield	050 080VS
52	Retaining Ring	052 910
54A	Harness Lug (2 req.)	054A080S
54B	Rod Brace Lug (2 req.)	054B080S
54C	Harness Lug Screw (8 req.)	054B080VS
55	Ball Bearing (4 req.)	055 080
55A	Ball Bearing (2 req.)	055 080ST
56	Rod Brace	056 116
56C	Rod Brace Assembly	056C115
56P	Rod Brace Pad	056P117
62	Click Spring	062 050
62A	Click Spring	062 545
63	Stand Screw (4 req.)	063 030T
63A	Handle Shaft Screw	063A050
63B	Handle Knob Screw	063 080VS
67	Pinion Gear Washer	067 070
67A	Retaining Screw	067A070
69A	Retaining Ring	069C245
81	Ratchet	081 080S
91	Handle Knob Shaft	091 080VS
95	Click Tongue Bushing	095 070
95A	Click Bushing Washer	095A050
95B	Retaining Plate	095B070
95S	Retaining Plate Screw	023 750
99	Hook Screw, L.H. (2 req.)	099 115
101	Ratchet Screw (6 req.)	101 030
101A	Drag Washer Screw (6 req.)	101 130S
110A	Locating Ring	110A030VS
110B	Shift Base	110B030VS
110C	Shift Button Retainer	110C030VS
112	Lever Knob Assembly	112 030VS
112A	Lever Knob Sleeve	112A030VS
112B	Lever Knob Screw	112B070
117A	Inner Drive Plate	117AN080T
117D	Outer Drive Plate	117DN080T
119	Shift Plate	119 024KG
124	Bridge Cover Assembly	124L080VS
128A	Drive Plate	128A024KG
133	Retaining Plate	133 030VS
134	Gear Stud	134 080VS
134B	Sleeve (2 req.)	134B080VS
134D	Gear Stud Collar	134D080VS
141	Cam Follower	141 070
143	Preset Screw	143 070
152	Rod Clamp Nut (2 req.)	152A080T
155	Turnbuckles (2 req.)	155 115
156	Drag Cover	156 080VS
156A	Lock Pin	156A030VS
156B	Lock Plate	156B030VS
161	Locating Pin Assembly (2 req.)	161C030VS
165	Hook Screw, R.H. (2 req.)	165 115
170	Catch Assembly	170 030VS
171	Shift Plunger	171 015KG
172	Shift Button	172 030VS
172A	Spacer	172A080VS
173B	Retaining Ring	173 080VS
183	Tube Frame	183 080VS
195	Retaining Ring	195 600
195A	Retaining Ring	067 030VS
195B	Spiral Retaining Ring	195 024KG
264	Stand Gasket	264 080T

KEY NO.	DESCRIPTION	PART NO.
1	Right Side Plate	001 080VS
2	Quadrant Ring	002 080VS
2A	Quadrant Spacer	002A080VS
4	Cam Thrust Washer	004 070
4A	Cam Teflon Washer	004A070
5H	Main Gear (High Speed)	005 080VSHS
5L	Main Gear (Low Speed)	005 080VLS
7A	Metal Drag Washer	007A080VS
13	Pinion Gear	013 080VSW
13A	Spool Sleeve	013B080VSW
13B	Pinion Gear Sleeve	013B070
14	Dog Spring (2 req.)	014 050

KEY NO.	DESCRIPTION	PART NO.
15	Dog (2 req.)	015 050
18	Disc Clutch Spring (4 req.)	018 080W
18H	Shift Spring (Heavy)	018H030VS
18L	Shift Spring (Light)	018L030VS
19	Eccentric Cam	019 070
21	Eccentric Lever	021 080VS
22	Dog Spring Screw (2 req.)	022 109
23	Handle Screw (2 req.)	023 030VS
24	Handle Complete	024 080VS
24B	Handle Blank	024 080VS-1
24C	Handle Knob Cap	024C080ST
25	Handle Knob Assembly	025 080ST

KEY NO.	DESCRIPTION	PART NO.
27	Left Side Plate-Assembly	027 080VS
29	Spool	029L080VSW
30	Stand	030 080VS
31	Short Screw (5 req.)	031T070
31T	Side Plate Screw (12 req.)	031 080VS
33	Rod Clamp	033 130ST
34	Clamp Screw (2 req.)	034 080VS
35	Click Tongue	035 130SN
36	Click Button	036N050
36A	Click Button Nut	036 700
36S	Click Button Cap	036S080ST
38A	Click Bushing Nut	038 710