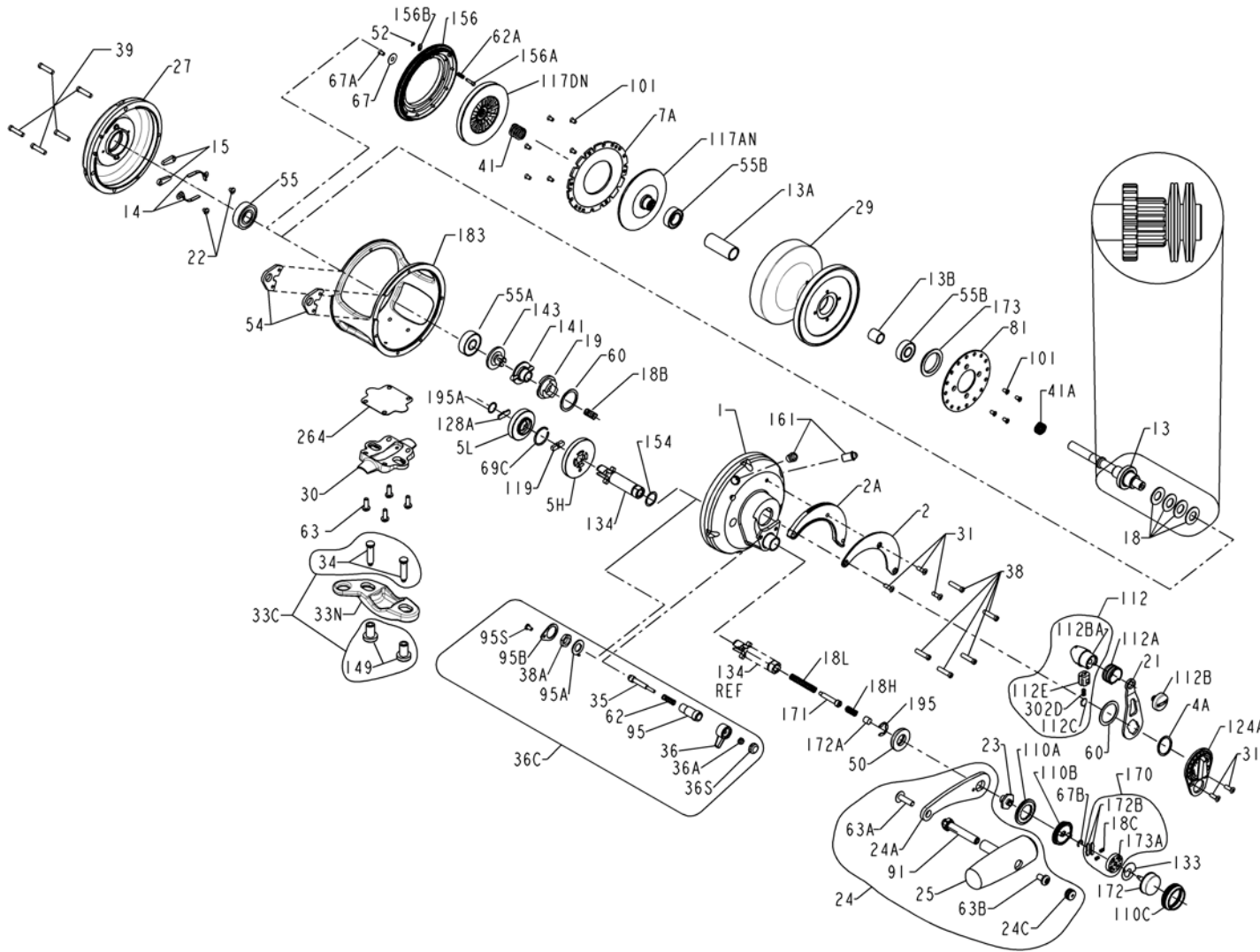




PARTS LIST FOR MODEL 50VSX



KEY NO.	DESCRIPTION	PART NO.	KEY NO.	DESCRIPTION	PART NO.	KEY NO.	DESCRIPTION	PART NO.
35	Click Tongue	035 070VS	14	Dog Spring (2 req.)	014 050	23	Handle Screw	031 T070
36	Click Lever	036N050	15	Dog (2 req.)	015 050	24	Handle Assembly	024 030VS
36A	Click Lever Nut	036 700	18	Clutch Spring (4 req.)	018 050TW	24A	Handle Blank	024 030VS-1
36C	Clicker Assembly	036C050VSW	18B	Drag Spring	018 349	24C	Handle Knob Cap	024C050M
36S	Click Button Cap	036S080ST	18C	Shift Catch Spring (2 req)	018C015KG	25	Handle Knob Assembly	025 050M
38	Right Side Plate Screw (5 req)	038 050VSX	18H	Shift Spring (Heavy)	018H030VS	27	Left Side Plate Assembly	027N050VSX
38A	Click Bushing Nut	038 710	18L	Shift Spring (Light)	018L030VS	29	Spool Assembly	029L050VSX
39	Left Side Plate Screw (5 req)	039 050VSX	19	Drag Cam	019 050VS	30	Stand	030 050VS
41	Drive Plate Bearing Spring	041 050	21	Drag Lever	021 050VS	31	Drag Lever/Quad Screw (5 req)	031 T070
41A	Drag Spring	041 070	22	Dog Spring Screw (2 req)	022 109	33C	Rod Clamp Kit	033C070VS
50	Gear Stud Shield	050 050VS				33N	Rod Clamp	033N070
52	Drag Cover Lock Retaining	052 910				34	Clamp Screw (2 req.)	034 070VS
54	Harness Lug (2 req.)	054 050T						
55	Left Side Ball Bearing	055 080						
55A	Right Side Ball Bearing	055 050						
55B	Spool Ball Bearing (2 req.)	055 080ST						
60	Drag Thrust Washer (2 req.)	060 050						
62	Click Spring	062 050						
62A	Drag Cover Lock Spring	062 545						
63	Stand Screw (4 req.)	063 030T						
63A	Handle Rivet Screw	063A050						
63B	Handle Knob Screw	063 050						
67	Pinion Retaining Washer	067 070						
67A	Pinion Retaining Screw	067A070						
67B	Shifter Retaining Ring	067 030VS						
69C	H / L Gear Retaining Ring	069C245						
81	Ratchet Disk Plate	081 050						
91	Handle Rivet	091N050						
95	Click Tongue Bushing	095 070						
95A	Click Bushing Washer	095A050						
95B	Click Retaining Plate	095B070						
95S	Click Retaining Plate Screw	023 750						
101	Drag / Ratchet Screw (10 req.)	101 030						
110A	Handle Screw Locking Ring	110A030VS						
110B	Shifter Base	110B030VS						
110C	Shifter Button Retaining Ring	110C030VS						
112	Drag Lever Knob Assembly	112 030VS						
112A	Drag Knob Sleeve	112A030VS						
112B	Drag Knob Screw	112B070						
112BA	Drag Lever Knob	112B030VS						
112C	Drag Click Plate	112C030VS						
112E	Drag Lever Click Plate Housing	112E030VS						
117AN	Inner Drive Plate Assembly	117AN070						
117DN	Drive Plate Assembly	117DN070VS						
119	Hi/Low Gear Shift Plate	119 024KG						
124A	Bridge Cover Assembly	124L050VS						
128A	Low Gear Drive Plate	128A024KG						
133	Shifter Retaining Plate	133 030VS						
134	Gear Stud	134N050VS						
141	Cam Follower	141 050VS						
143	Preset Screw	143 050VS						
149	Rod Clamp Nut (2 req.)	149 070						
*154	*Gear Stud Shim (As Needed)	*154 080						
156	Drag Cover Assembly	156N050VS						
156A	Drag Cover Lock Pin	156A030VS						
156B	Drag Cover Lock Plate	156B030VS						
161	Drag Locating Pin Asm (2 req.)	161C030VSW						
170	Shifter Catch Assembly	170 030VS						
171	Shifter Plunger (Screw)	171 030VS						
172	Shifter Button	172 030VS						
172A	Shifter Spacer	172A050VS						
172B	Shifter Catch Plate(2 req)	173 030VS						
173	Spool Bushing	173 050VS						
173A	Shifter Catch Holder	173A030VS						
183	Tube Frame	183 050VSX						
195	Retaining Ring	195 040						
195A	Spiral Retaining Ring	195 024KG						
264	Stand Gasket	264 030VS						
302D	Drag Click Plate Spring	302D525MAG						
	* One Shown							